



SRI BALAJI 
ENGG & AUTOMATION

PRECISION ENGG & AUTOMATION FOR THE FUTURE



Sri Balaji Engg & Automation (SBE) is a company of manufacturing high quality compressed air and Pneumatic Automation products. And the company was established in 2015.

The Promoters of this company have been in this field for the last 3 decades in designing and manufacturing of Pneumatic equipment for critical applications in Power Sectors, Automobile, Pharmaceutical, Textile, Packaging Industry, Oil gas and Food Industry.

We at **SBE** design and manufacture the highest quality products which we meet and exceed the criteria of our customers and appropriate regulatory authorities. We are committed to constant long-term improvement of our products and processes to give best solutions to the clients. Since the start of our business, we have been expanding gradually with several different clients in INDIA.

We are committed to achieve customer satisfaction by delivering products and services with compliance of all applicable requirements that meet or exceed customer expectations on quality and delivery.



SBE WAS FOUNDED OF 6 CORE VALUES



STANDARD PNEUMATIC CYLINDERS

Pneumatic cylinders use the force of air to move in both extends and retract strokes. They have two ports to allow air in, one for outstroke and one for instroke. Stroke length for this design is not limited. We offer standard cylinders from 32mm bore to 150 mm bore with stroke range from 25mm to & as per customer requirements.



SBE Cylinders



ISO-6431 Cylinders

TECHNICAL SPECIFICATIONS:

Cylinder Bore (Metric)	32mm, 45mm, 50mm, 63mm, 76mm, 100mm, 125mm, 150mm, 200mm, 250mm, 300mm, 350mm
Inch Version	1.25", 1.75", 2", 3", 4", 5", 6", 8", 10", 12", 14" & 16"
Working Pressure	2-10bar
ISO-6431 (Metric)	32mm, 40mm, 63mm, 80mm, 100mm, 125mm, 160mm, 200mm
Working Pressure	1-10bar
Standard Strokes (mm)	25mm, 50mm, 75mm, 100mm, ----- 400mm, 450mm, 500mm & etc.,
Cylinder Type	Single Acting Cylinder, Double Acting Cylinder, Impact cylinders, Heavy Duty Cylinder, & etc.,
Operating Temperature	0-80°C
Material of construction	Al.alloy bar stock, brass, nitrile or viton, hard anodised, en-8, SS-202, & also as per customer requirements.
Mountings	Foot Mtg, Front Flange, Rear clevis, Central Triunion, Nose Mtg & also as per customer requirements.
Accessories	Clevis Foot Mtg Bracket, Wall Mtg Bracket, Triunion Bracket

CUSTOMISED CYLINDERS

Customized Pneumatic Cylinder which is customized as per the specifications of our clients. SBE offers various customised cylinders from 32mm bore to 350 mm bore with stroke range up to 2200 mm.



IMPACT CYLINDERS

Ideally suited to a wide range of marking, piercing and light press work applications. SBE offers various impact cylinders from 32mm bore to 150 mm bore.



TECHNICAL SPECIFICATIONS:

Cylinder Bore (Metric)	50mm, 76mm, 102mm & 152mm
Cylinder Type	Impact Cylinder
Working Pressure	2-10bar
Operating Temperature	0-80°C
Material of construction	Al.alloy bar stock, Cast Iron, Seamless tube, M.S, brass, hard anodised en-25, SS-202, Nitrile & as per customer requirements.

MOUNTINGS

We offer several different mounting options for our pneumatic cylinders.

SBE Mountings



LB Mtg
Type: Foot Bracket



FA/FB-Mtg
Type: Flange



SI-TC-Mtg



Y+Pin-Mtg
Type: Joint



CA-B-Mtg
Type: Single Earring



CB-B-Mtg
Type: Double Earring

ISO-6431 Mountings



ISO-LB



ISO-FA FB



ISO-Y



ISO-CB+PIN



ISO-CA

Mountings and its uses:

Properly applied pneumatic and hydraulic cylinders provide outstanding linear-actuation performance in a wide variety of applications. But if applied improperly, a cylinder in short order may not only ruin itself but also the equipment on which it is installed. Cylinder mounting styles fall into three major groups. Here’s a closer look at each.

Centreline mounts:

The best way to support a cylinder is along its centreline. Fixed mounts that absorb force along the cylinder centreline, including extended tie rod, centreline lug, and flange mounts, should be used whenever possible.

Flange mounts:

Flange mounts are also considered to be fixed-centreline mounting styles and are among the best mounts for use on straight-line, force-transfer applications. Three types of flange mounting styles at each end of the cylinder are the head (rod end) or cap rectangular flange, head or cap square flange, and rectangular head or cap.

Pivot mounts:

Pivot mounts also absorb force on their centrelines and should be used on applications where a dynamic machine member travels in a curved path. The two basic types are clevis and trunnion mounts. Both can be used on tension (pull) or thrust (push) applications at full rated pressure.

Pneumatic Valves:

Pneumatic valves are one of the components responsible for regulating the pressure, rate, and amount of air that circulates throughout a pneumatic system. We at SBE manufactures all type of pneumatic valves such as Solenoid valves, Quick Exhaust valves, Foot operated valves, Compact valves, Hand lever valves, Spool valves & etc., Valves are constructed from zinc or aluminium and machined bodies. Porting can be with either NPT, BSP & Metric threads to meet connection preferences. Mechanically operated valves can be either spool or poppet designs depending on valve selection. We also design special purpose valves as per customer requirements.



WE SBE Supplied to Many of the industries like:

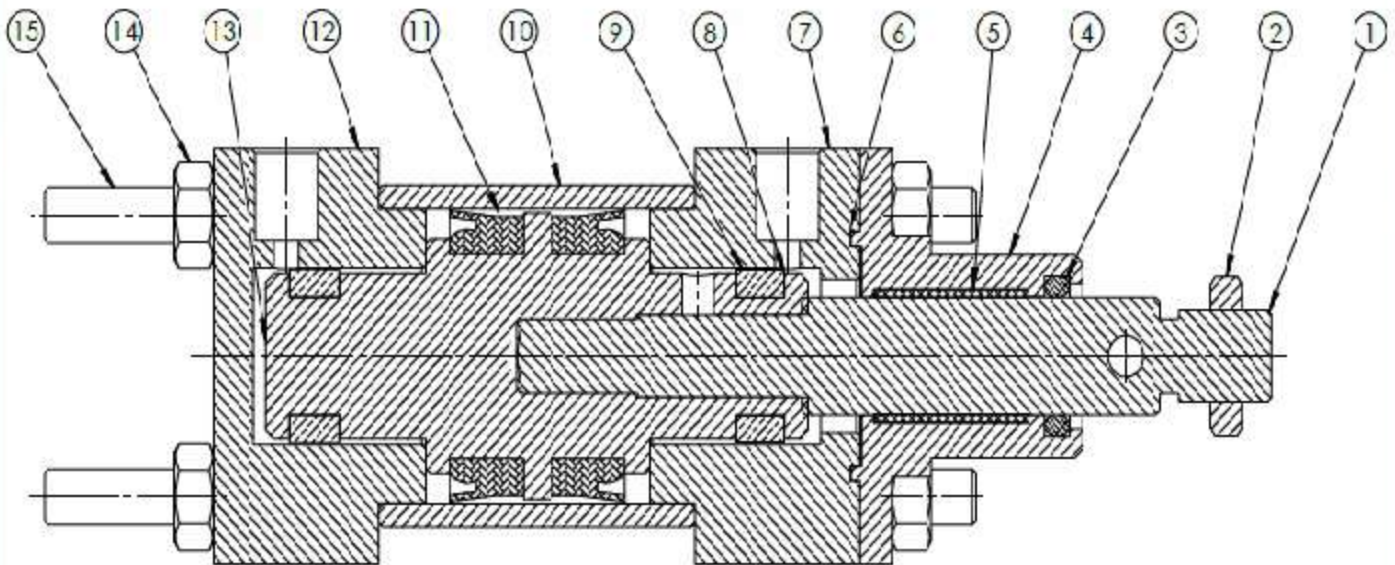
- Power Plants
- Cement
- Casting
- Packaging Industries
- Rubber tyres
- Railway Wagon Manufactures
- Bus door Operations
- Knife Gate
- Press Component Applications & Etc.



SECTIONAL VIEW OF PNEUMATIC CYLINDER

PARTS LIST

- | | | |
|-----------------------|--------------------|--------------------|
| 1. Piston Rod | 6. Hat Packing | 11. U-Packing |
| 2. Hex Jam Nut | 7. Front End Cover | 12. Rear End Cover |
| 3. Wiper Seal | 8. Retaining Clip | 13. Piston |
| 4. Piston Rod Bearing | 9. ED Seal | 14. Hexa Nut |
| 5. Nylon Bearing | 10. Barrel | 15. Tie Rod |



For more details, contact



SRI BALAJI 
ENGG & AUTOMATION

FACTORY ADDRESS:

24-779, Panchaseela Colony, Ranga Reddy Nagar, Hyderabad-500 037. Telangana, India
+91 89783 10287 / 80085 45252 | e-mail: info2bea@gmail.com